

The Public Private Partnerships in Elderly Welfare Provided in Thailand

Rattachart Thatsanai

Faculty of Humanities and Social Sciences, Valaya Alongkorn Rajabhat University under the Royal Patronage, Thailand

E-mail: kunrattachart@gmail.com

Article History

Received: 20 March 2019

Revised: 18 August 2019

Published: 30 September 2019

Abstract

The main objective of this research is to study the guidelines for creating a partnership between the government and the private sector in the provision of elderly welfare in Thailand by using a combination of research to collect data from 17 in-depth interviews and group discussions from 15 elderly persons in each province. While quantitative studies, the research team collected data from 2,044 elderly from the sample provinces. The results showed that the regulations, policies and guidelines relating to the creation of partnership between the public and private sectors in the provision of elderly welfare in Thailand are distributed in many agencies without integration. Therefore, it should be specific laws which will make the operation possible. Welfare that the elderly want from the creation of a partnership between the public and private sectors are an employment, medical treatment and housing. Factors affecting the success of establishing a partnership between the public and private sectors in providing welfare for the elderly. It was found variables that were studied were 37.1 percent ($R^2 = 0.371$). The study found that only 4 factors affected overall success include Private sector operations, Public sector operations, Management and Cooperation from all sectors with statistical significance at 0.001. However qualitative research has indicated that government operations are another important factor as well. The guidelines for creating a partnership between the government and the private sector in the provision of elderly welfare are integration 5 factors, which are the main components and the supplementary elements, tax incentive measures and economic stimulation.

Keywords: Public Private Partnerships, Welfare, Elderly, Thailand

Background and significance of the problem

The change in demographic structure with the transition in becoming an aging society, is an important issue in many countries. Aging society will affect the management of public and private sectors in many respects. One thing that those seniors expect that they must have the rights to service or access to services from the government or the private sector, which is like harvesting products from those seniors working throughout their lives. In which the product may come in the form of welfare payments, pensions or other types of welfare that the government is the main supplier and service provider the welfare is considered to have a lot of budget from the government as Thailand is in the developing world that needs to be developed, whether in the infrastructure, either in the Hard Infrastructure group or even Soft Infrastructure Which is necessary to use a lot of capital Together with insufficient government revenue (Burakam, 2015). Therefore, Thailand has an investment budget of 16-17 percent while using the budget in terms of the highest current expenditure Up to 73%-74% (Socatiyanurak, 2016). The concept of public-

private partnership (PPP) is adopted to resolve financial and other problems that cause the government sector not to be able to fully implement the policy by encouraging the private sector to play a role in increasing efficiency and being able to manage according to the needed policies or projects (New Public Management-NPM) (Pattberg et al., 2012). The government and the private sector will apply to provide welfare for the elderly in Thailand. There are other benefits or advantages such as the elderly will receive good service, and have access to services resulting from cooperation. There are more options. While the government sector will have more funding sources which help reducing risks from various investments and increasing the country's capacity. While the private sector will have the opportunity to invest people in ages, will get more employment opportunities. (Delmon, 2009)

From the above, the researchers aimed to study the rules, regulations, policies and practices as well as the possibility of establishing a partnership between the government and the private sector in the provision of elderly welfare in Thailand and analyze the factors of success in establishing a partnership between the government and the private sector in the provision of elderly welfare in Thailand

Objectives of The Research: 1) To study rules, regulations, policies, guidelines as well as the possibility of establishing a partnership between the government and the private sector in the provision of elderly welfare in Thailand. 2) To study the welfare characteristics that the elderly want from being a partnership between the government and the private sector in the provision of elderly welfare in Thailand. 3) To analyze the factors of success in establishing a partnership between the government and the private sector in the provision of elderly welfare in Thailand.

4) To present appropriate guidelines for establishing partnership between the government and the private sector in the provision of elderly welfare in Thailand.

Literature Review

From the study of the creation of a partnership between the government and the private sector in the provision of welfare for the elderly in Thailand the researcher found that there are concepts, theories, regulations and related research. The State Enterprise Policy Office (2018) discusses the guidelines for creating a partnership between the public and private sectors that the service is under the responsibility of the government sector. While the private sector makes it a clear agreement to deliver services, public or government infrastructure. The researcher sees that it is a solution to the government budget problems and encourages employment in the private sector, That problems in accordance with research of Chaipong (2019) and Netithanakul (2015) Which were said about the problems of Elderly Public Policy. The method of operation was studied from New Public Management (NPM) (Pattberg et al., 2012: 2), State Enterprise Policy Office (2019), and the Act on Private Participation in State Enterprises (1992) based on the concept of creating such partnerships. The researchers applied to the problems of elderly welfare management in Thailand. That is a problem both budget and operation Department of Elderly Affairs (2016), Boonniamtang (2017), mentioned the measures of Korea that encourages private sector to hire more elderly people and Monnuanprang (2019) mentioned the Development of Elderly Care Management Model in Nonthaburi. In addition, Prachuabmoh (2010) and Whangmahaporn (2018, 2019) indicated that the elderly welfare should cover the life of the elderly in order to enable the elderly to live happily and not be a burden to anyone. The researcher found that such concepts and rules are important elements that are related to each other as a guide to creating a partnership between the government and the private sector in providing welfare for the elderly.

Research Methodology

Variables used in research: Variables on creating a partnership between the government and the private sector in providing welfare for the elderly consist of the following independent variables 1) government operation 2) private sector operations 3) public sector operations 4) access to the services of the elderly 5) management of partnership between state and private 6) cooperation of related parties. The success in establishing a partnership between the government and the private sector in providing welfare for the elderly is dependent variable.

Population and sample: The population used in the research in quantitative research is the elderly living in Thailand with a total of 10,731,000 people, selected from the provinces that have the elderly index and the severity of being the elderly of each region, therefore, have representatives in 5 provinces. Using the Yamane formula (1973), the sample size of the province is represented as follows: Bangkok 400 people, Lampang 399 people, Khon Kaen 398 people, Sing Buri 396 people, and Phatthalung 398 people. On qualitative research using interview a sample of 17 people and group discussion using 15 representatives from the elderly in all 5 provinces.

Tools used in Research: This study is a mixed research. The questionnaire is used as a tool for quantitative research, divided into 3 parts. The second part is the 5 scale rating scale questionnaire. (Likert Scale) for qualitative research using interview form In depth interviews and using video and audio recording, taking notes in group discussions In addition, observations are also used as data collection tools.

Data analysis: Using descriptive statistics with frequency, percentage, mean and standard deviation, and inferential statistics such as correlation analysis and multiple regression.

Research Results

From the results of this study, the results of the study can be summarized as follows: The general characteristics of the population used in this study are female than males. With all the sample aged between 60-69 years with marital status and most (81.6%) have children between 1-5 people, more than half live outside the municipality While the educational characteristics showed that most of them had primary education in the occupation of the elderly, it is found that almost half of the elderly do not work. For income issues, it was found that before and after entering the elderly age, the elderly who have a sample of 1-14,999 baht (63.3 percent and 82.5 percent, respectively), with more than half (77.1 percent) are elderly without savings. Most of the elderly live with 65.6 percent of children, and 80.8 percent of them perceive that they are cared for by their children. In support of most seniors, they perceive themselves to be more supportive from the government. The private sector saw that 81.1% of the government's support was received, and 4.7% was supported by the private sector. In addition, the study results could be explained according to the objectives. The findings were as follows:

1. On regulations, policies and guidelines relating to the creation of partnership between the public and private sectors in the provision of elderly welfare in Thailand, there are a lot of distribution in many departments, without the integration. Therefore, there should be specific laws which will make more operable.
2. The elder respondent viewed the issues they need from creating a partnership between the government and the private sector in the provision of elderly welfare as follows: 1) Supporting about the safety of the elderly 2) Elderly health care 3) Recreational activities 4) Providing elder courses 5) Employment 6) Tourism 7) Budget 8) Requirement for medical equipment support from private sector 9) Hospital improvement for the elderly 10) medical welfare 11) increase the

allowance. In addition, there are welfare or specific services that the elderly want, such as the shuttle bus for the elderly, clinic for elder, employment, education for seniors, housing for seniors, financial collateral.

3. On factors for success in establishing a partnership between the government and the private sector in the provision of elderly welfare in Thailand, it was found that all the variables that were studied were able to explain the success of the partnership between the government and the private sector in the provision of welfare for the elderly in the overall at 37.1 percent ($R^2 = 0.371$). On factors affecting the success of creating a partnership between the public and private sectors in the provision of welfare as a whole, it was found that private sector operations public sector operations management and cooperation from all sectors affected success with statistical significance at 0.001 (Table 1). In addition, qualitative research results also showed that government operational factors are also important factor.

Table 1 Multiple Regression Analysis: Success in the partnership between public and private sectors in the provision of welfare for the elderly as a whole

Success factors	B	Std. Error	Beta	t	Sig	Collinearity Tolerance	VIF
Government operation	0.015	0.020	0.021	0.735	0.463	0.375	2.666
Private sector operations	0.069	0.017	0.142	3.949	0.000***	0.249	4.013
Public sector operations	0.194	0.028	0.208	6.996	0.000***	0.362	2.759
Management of partnership between state and private	0.065	0.019	0.108	3.407	0.001***	0.322	3.109
Access to the services of the elderly	0.006	0.035	0.005	0.162	0.871	0.341	2.930
Cooperation of related parties	0.206	0.032	0.206	6.442	0.000***	0.314	3.185
R^2			0.371				
Durbin-Watson			1.823				

Note: *** There was statistical significance at the 0.00 level

4. Appropriate guidelines for establishing partnership between the government and the private sector in the provision of elderly welfare in Thailand, the researchers consider that the guidelines are composed of 5 parts, which are the main components and some supplementary elements, which, when linked to each other, will be a guideline for creating a partnership between the government and the private sector in Elderly welfare management in Thailand (Figure 1)

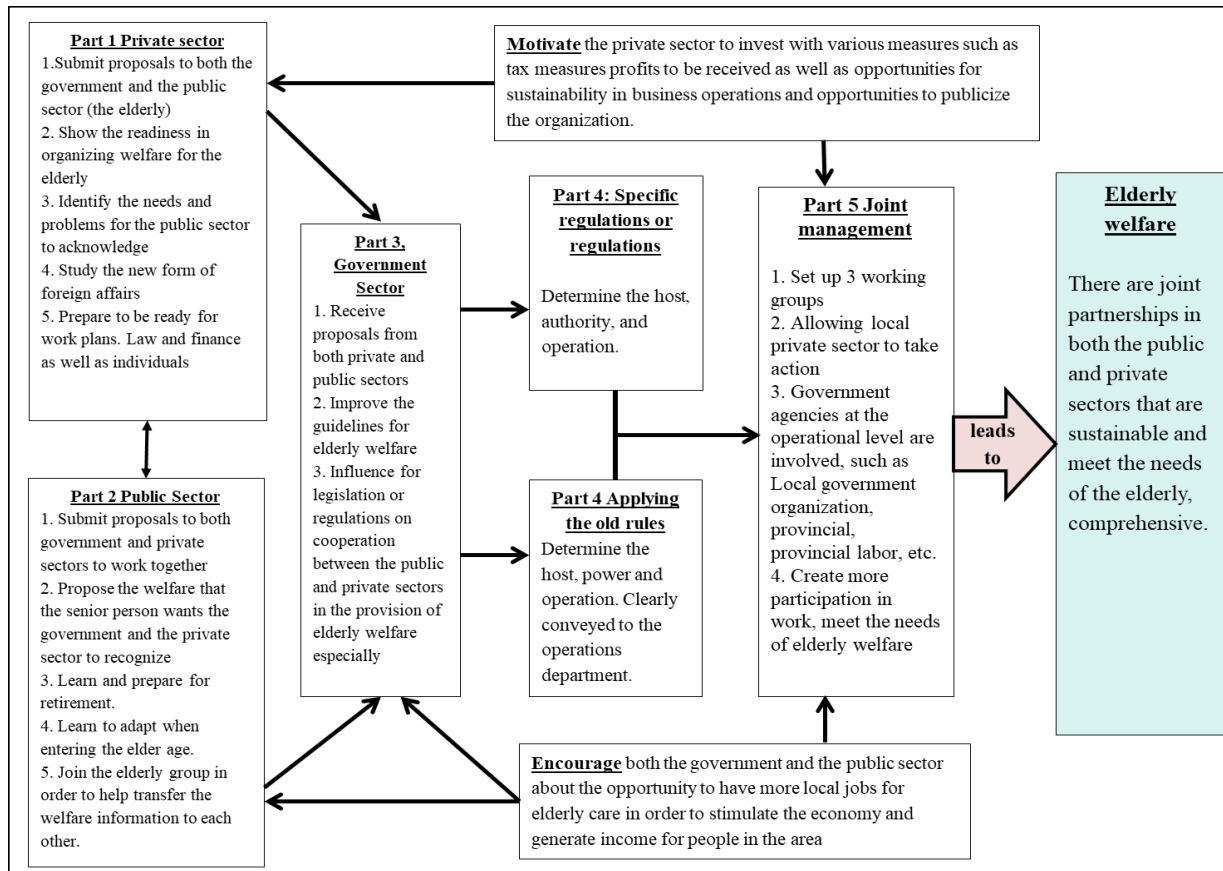


Figure 1 shows the appropriate guidelines for creating a partnership between the government and the private sector in the provision of elderly welfare in Thailand.

Discussions and Conclusion

Although, as a result, it is found that quantitative government action does not affect the success of establishing a partnership between the government and the private sector in the provision of elderly welfare in Thailand due to The implementation of the former government sector that affects public perception of public-private cooperation However, the results from qualitative research showed different opinion that the government sector is also an important part in implementing such policies because policy implementation in Thailand, government roles are still important. For the private sector's operations, it is a driving force in the form of operations or implementation that can produce concrete results better than the public sector. In addition, from the research results, it was found that the implementation of the private sector had a significant impact on the success of establishing a partnership between the government and the private sector in the provision of elderly welfare in Thailand, consistent with the Secretariat of the House of Representatives (2016). Where it was found the actions of a partner of a private sector led to success due to the specialization of the sector. As for the implementation of the public sector, the success of creating a partnership between the government and the private sector in the provision of elderly welfare in Thailand comes from the fact that the variety actions are often projects that directly and indirectly affect the people Therefore, in carrying out various activities or projects, it is very necessary to focus on the operation of the public sector. As for management, it is an important process that affects the importance of various operations. In this study, it is found that it is consistent with the above mentioned. The results of this study are

consistent with the study, including Ramakrishnan's report (2012) and the State Enterprise Policy Office. (2019). It was found that the decision of the management of various locations in choosing the private sector determining projects, management to choose private sector determined the success of a joint partnership between the public and private sectors. In addition, cooperation is a process that arises from the fact that various sectors have a common goal to do some things together. Therefore, when cooperation occurs, it will result in the successful implementation or project. From this study, it was found that it was consistent with the study of Sarakarn (2018) which found that the government sector, The private sector and civil society are groups that collaborate, work, plan, decide to take action and mobilize resources that affect the success of the partnership.

Suggestion

Suggestions for research application.

From the demographic changes entering Thailand into an aging society which will increase the number of older people in the future, meeting the needs of the people is something that every sector must deal with. However, due to various restrictions and increasing demand, the government will take various actions by themselves, may not be able to fully meet the needs of people or the elderly or society. Therefore, the opportunity for the private sector to participate in welfare management is the most appropriate. that the government sector should support and drive the operation in the form of joint partnership between public and private sectors by considering the factors of success, including private sector operations, public sector operations, management and cooperation from all sectors.

In addition to creating courses to develop those who have to perform their duties regarding the creation of a partnership between the public and private sectors, there should be a practice leader and community of practitioners to act as a driving force for partnership between the public and private sectors in the future.

Suggestions for further research

- 1) In this study, the research conducted an overall study by selecting a province that is as described in the research methodology section. In the future, studies may be conducted in the form of in-depth studies, by giving particular importance to a particular province that will lead to the creation of findings for specific proposals or guidelines for their province.
- 2) In this study, the research conducted a study by selecting the province where there was the highest level of elderly in the region as a representative in education. In the future the study should be conducted in province where is the economic center or economic potential.

References

- Boonniamtang, C. 2017. "Welfare for the elderly in the Republic of Korea: Case of the elderly center in the Greater Seoul area." **Academic Journal of the Association of Private Higher Education Institutions of Thailand**: 34-42.
- Burakam, P. 2015. **Lecture on finance, finance and financial institutions**. Bangkok: Faculty of Public Administration, National Institute of Development Administration.
- Chaiyapong, A., Ittithanasuphavitch, V., Yindee, N., Rattanawut, J., & Chungern, T. 2019. "Guidelines for the Appropriate Career Development of the Elderly in Makok Neau Sub-District Municipality, Phatthalung, Thailand." **Asian Administration and Management Review** 2 (1): 202-213.

- Delmon, J. 2009. **Private Sector Investment in Infrastructure: Project Finance PPP Project and Risk**. Netherlands: Kluwer Law International.
- Department of Elderly Affairs. 2016. **National Elderly Plan No. 2, 2002-2564**. Retrieved from www.dop.go.th/th/laws/1/28.
- Monnuanprang, P., Vanpetch, W., Sangngern, S., Maneechote, T., Chuaypanang, K., & Chodilok, S. 2019. "The Development of Elderly Care Management Model of Local Administration Organization in Nonthaburi, Thailand." *PSAKU International Journal of Interdisciplinary Research* 8 (1): 77-85.
- Netithanakul, A. 2015. "Public Policy in Healthcare Utilization of the Elderly: Evidence from Kanchanaburi DSS, Thailand." *RSU International Journal of College of Government* 2 (1): 15-22
- Pattberg, P. 2012. **Public-Private Partnership of Sustainable Development: Emergence, Influence and Legitimacy**. Massachusetts: Edward Elgar Publishing.
- Prachuabmoh, W. 2010. **Towards the Senior population century**. Bangkok: Chulalongkorn University Press.
- Ramakrishnan, D. 2012. **Public Private Partnership (PPP) in Indian Health Care**. Retrieved from, <http://ssrn.com/abstract=2186897>.
- Sarakarn, A. 2018. "Guidelines for creating a local government organization that is excellent in strengthening public, private and civil society networks: a case study of Roi Et Municipality." *Political Science and Public Administration Journal* 9(1): 29-58
- Secretariat of the House of Representatives. 2016. **Government Information Center**. Retrieved from www.parliament.go.th/ewtadmin/ewt/parliament_parcy/main.php?filename=gennews_home.
- State Enterprise Policy Office. 2015. **Laws, regulations, announcements, orders, guidelines under the Investment Investment Act of 2013 and other related laws**. Retrieved from, www.ppp.sepo.go.th/tiny_mce/plugins/filemanager/thumbs//PPP56.pdf.
- State Enterprise Policy Office. 2018. **State Enterprise Policy Office**. Retrieved from www.ppp.sepo.go.th/contents/65.
- Socatiyanurak, W. 2016. **Documents for lectures, courses, finance and monetary policy**. Bangkok: Faculty of Public Administration National Institute of Development Administration.
- Whangmahaporn, P. 2019. "The Development of Operational Achievements in the Elderly Quality of Life Development and Career Promotion Centers of Thailand." *PSAKU International Journal of Interdisciplinary Research* 8 (1): 62-76.
- Whangmahaporn, P., Simmonds, P., & Whangmahaporn, B. 2018. "Factors Affecting Quality of Life of the Elderly in Thailand." *Asian Political Science Review* 2 (2): 79-87.
- Whangmahaporn, P. 2018. "Characteristics of Elderly Home Care Volunteers in Western of Thailand." *International Journal of Crime, Law and Social Issues* 5 (2): 87-99.
- Yamane, T. 1973. **Statistic: An Introductory Analysis**. 3rd ed. New York: Harper and Row.